



Wijma Kampen B.V.
Haatlandhaven 3
Postbus 241
8260 AE Kampen
The Netherlands
T. +31 (0)38 331 64 44
F. +31 (0)38 332 20 40
I. www.wijma.com
E. wijma@wijma.com

RESPONSIBLY PRODUCED TIMBER

Wijma operates its own concessions in West Africa where various species of timber are felled by our own workers, using responsible methods. This includes many timber species as well as timber bearing the FSC label.

Our concessions and our trading contacts enable us to supply an extremely wide range of timber products in just about any species and grade.

Where non FSC-labelled timber is concerned, we also do all we can to verify the origin and legality of the timber.

ENVIRONMENT

Timber isn't just organic: to grow a cubic metre of wood requires little more than solar energy! Wood places virtually no strain on the environment while it is growing, during its use, and even afterwards.

By and for nature: timber is energy-efficient, sustainable, and naturally beautiful.

WIJMA - LOCK GATES



Traditional indestructible Dutch workmanship: wooden lock gates. Natural charm, long lasting and effective.



Printed on chlorine-free paper which conforms to ISO 91400, EMAS and FSC norms.



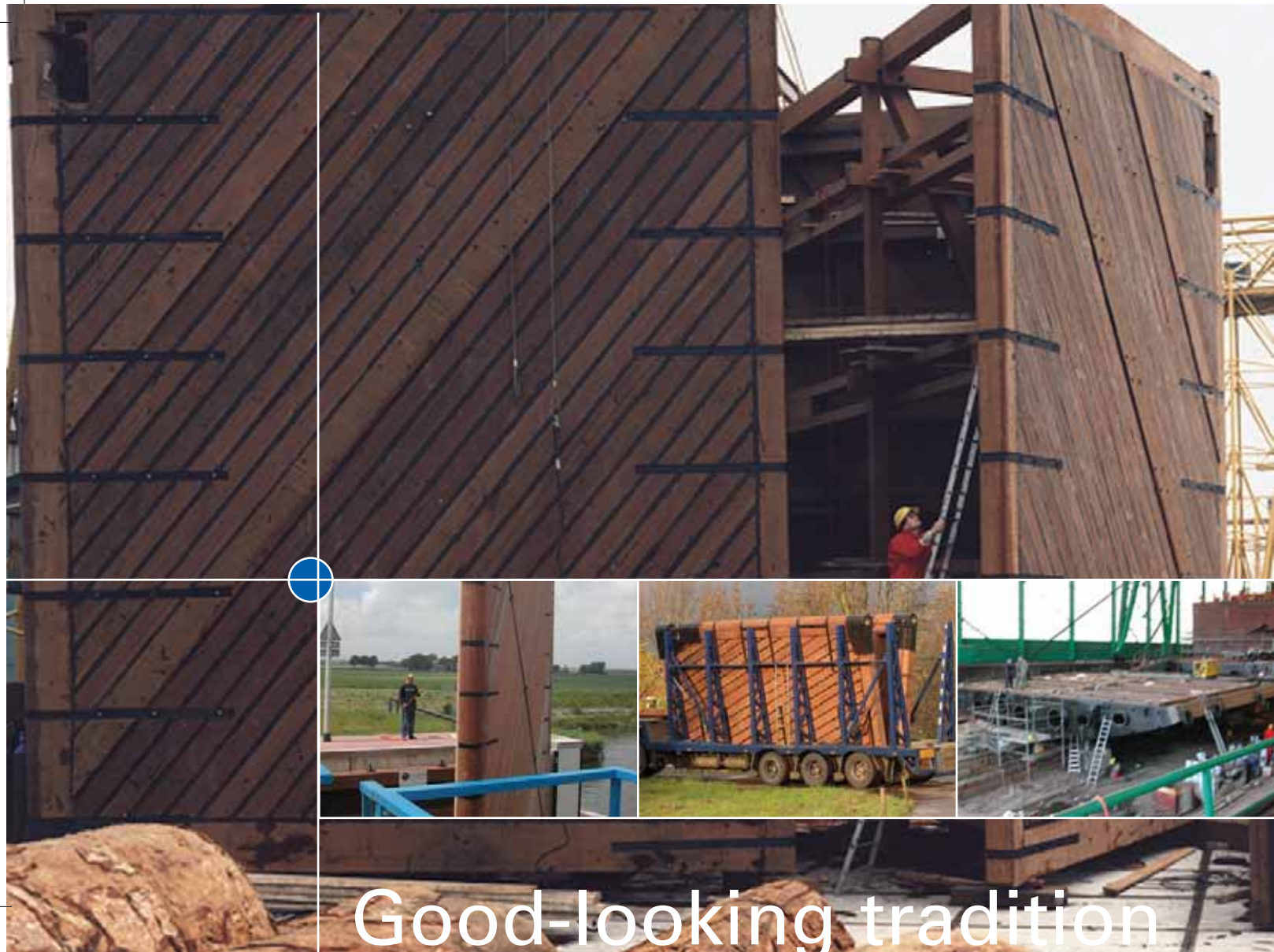
FSC Trademark © 1996 Forest Stewardship Council A.C. The FSC logo stands for forests which have been certified according to the guide lines of FSC.



Subsidiary of the Koninklijke Houthandel G. Wijma & Zonen B.V.

Wijma

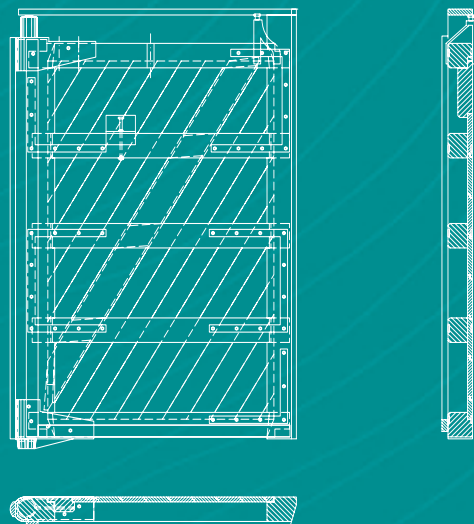
The Netherlands, Brazil, Cameroon, France, Germany, Ghana, Great Britain, Ivorycoast.



Good-looking tradition

Since the conception of lock gates, they have been made from wood, and in particular durable hardwoods. In the past oak was the preferred choice of timber, but nowadays Azobé(Ekki), Greenheart and Tali are often used, alongside other species of timber which meets the necessary structural characteristics and are sufficiently long lasting.

The production of lock gates demands a high degree of specialist workmanship, and over the decades Wijma has become an expert in the field. Timber lock gates form a good-looking, logical and natural combination with brick lock walls, natural rock, concrete and of course water...



New constructions and renovation.

We have our own team which designs new lock gates and draws up renovation plans for existing structures.

Wijma is more than happy to take responsibility for the complete project: from the first rough drawings to delivery, installation and stepping in of the finished product. Whether the project is within the Netherlands or abroad, in salt or fresh water, for Wijma it is no problem.

We make use of the newest technology to produce the most traditional effects, such as perfectly fitting mortise and tenon joints.

Our international reputation is founded on providing tightly fitting, long lasting and maintenance free solutions for a problem which can be best trusted to the Dutch more than any other nation: regulating and controlling water flow.

